

# European Assets Trust

Wider than normal discount has scope to narrow

European Assets Trust (EAT) aims to deliver long-term capital growth through a fundamental approach to investing in small and medium-sized companies in Europe (excluding the UK). The manager, Sam Cosh, also concentrates on the preservation of capital, which is reflected in the focus on quality companies and a disciplined approach to valuation. Over the past 10 years, the trust has delivered an annualised c 14% NAV total return. EAT has a high payout policy and its 6% dividend yield is the highest among peers. Dual listed in the Netherlands and the UK, EAT's shareholders have approved the migration of the company to the UK, effective in mid-March 2019. This may result in EAT's inclusion in the FTSE Small Cap and FTSE All-Shares indices, which could increase demand for the shares. Combined with the attractive dividend yield, there is scope for its current wider-than-average discount to NAV to narrow.

12 months ending	Share price (%)	NAV (%)	EMIX Smaller European ex-UK (%)	FTSE AW Europe ex-UK (%)	FTSE All-Share (%)
31/12/14	8.5	7.6	(1.9)	(1.4)	1.2
31/12/15	20.2	20.6	17.2	5.5	1.0
31/12/16	(2.9)	7.2	23.3	21.2	16.8
31/12/17	37.0	22.8	23.3	16.9	13.1
31/12/18	(23.1)	(15.5)	(12.7)	(9.1)	(9.5)

Source: Morningstar, Thompson Datastream. Note: All % on a total return basis in GBP.

## Investment strategy: Valuation discipline and patient

The manager looks for quality companies with sustainable competitive advantages that are attractively valued over the long term. Cosh is comfortable with being contrarian, investing in stocks that may be out of favour and is patient, awaiting a price entry point that provides sufficient protection for downside risks and good upside reward. Unconstrained by benchmark considerations, the portfolio of c 40 stocks reflects his highest-conviction investment ideas.

## Market outlook: Geopolitical factors driving markets

European equities have corrected over the past year, and the EMIX Smaller Europe ex-UK index has fallen c 12% sterling terms since its August 2018 peak. Cyclical headwinds prevailed, such as higher US interest rates and less favourable liquidity conditions as central banks reverse quantitative easing (QE). Valuations a year ago were also looking demanding. However, the magnitude of the derating has been exacerbated by geopolitical risks, which have been more acute than expected, including the US-China trade dispute and Brexit. Such factors seem likely to continue to drive investor sentiment and the direction of European stock markets for the time being.

## Valuation: Wider than average discount, high yield

EAT is trading at a discount to cum-income NAV of 7.8%, which is considerably wider than the three-year average of 2.3%, reflecting investors' increased sensitivity to risk. The 6% dividend yield continues to be significantly higher than the peer group, and has traditionally supported strong demand for the company's shares.

## Investment trusts

28 January 2019

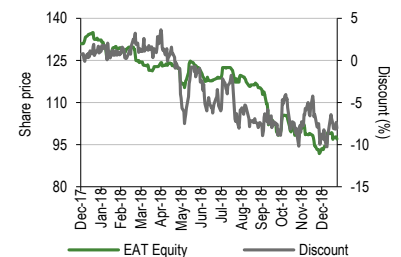
**Price** 97.0p  
**Market cap** £349.0m  
**AUM** £377.4m

NAV\* 104.9p  
Discount to NAV 7.8%

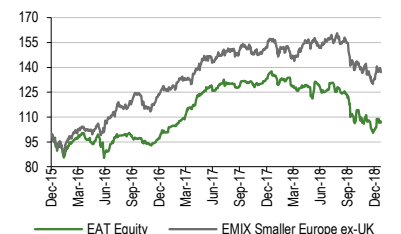
\*Including income. As at 24 January 2019.

Yield 6.0%  
Ordinary shares in issue 359.8m  
Code EAT  
Primary exchange LSE  
AIC sector European Smaller Companies  
Benchmark EMIX Smaller Europe ex-UK

## Share price/discount performance



## Three-year performance vs index



52-week high/low 132.3p 91.8p  
NAV\*\* high/low 131.1p 100.2p

\*\*Including income.

## Gearing

Gross\* 0.7%  
Net\* 0.7%

\*As at 31 December 2018.

## Analysts

Helena Coles +44 (0)20 3681 2522  
Mel Jenner +44 (0)20 3077 5720

[investmenttrusts@edisongroup.com](mailto:investmenttrusts@edisongroup.com)

[Edison profile page](#)

**European Assets Trust is a research client of Edison Investment Research Limited**

## Exhibit 1: Trust at a glance

### Investment objective and fund background

European Assets Trust is an investment company incorporated in the Netherlands and listed on the LSE and Euronext Amsterdam. Following shareholders' approval, the trust will legally migrate to the UK from mid-March 2019. It targets capital growth through investment in quoted small- and medium-sized companies in Europe (ex-UK), taking the EMIX Smaller Europe ex-UK index as a benchmark. It has adopted a high distribution policy; dividends have been paid from a combination of income and capital.

### Recent developments

- 10 January 2019: EGM – shareholders approved the migration of the company's legal seat and structure from the Netherlands to the UK, effective March 2019.
- 8 January 2019: declaration of 2019 total dividend of €0.0684 per share.
- 27 November 2018: board proposal to migrate EAT from the Netherlands to the United Kingdom by means of a cross border merger.

### Forthcoming

AGM	May 2019
Final results	March 2019
Year end	31 December
Dividend paid	Quarterly
Launch date	1972
Continuation vote	None

### Capital structure

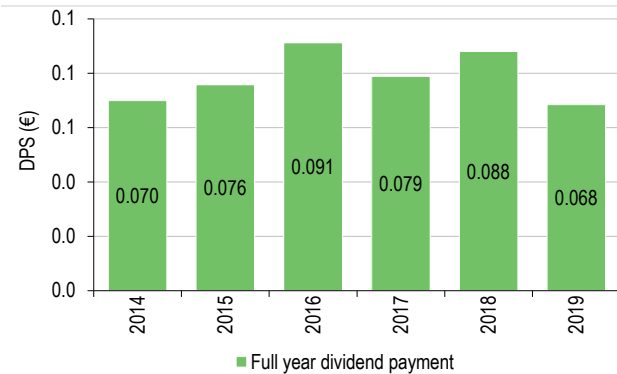
Ongoing charges	1.06%
Net gearing	0.7% as at end-Dec 2018
Annual mgmt fee	0.8% of gross assets reducing to 0.65% above €500m
Performance fee	None
Trust life	Indefinite
Loan facilities	€45m with Kas Bank

### Fund details

Group	BMO Global Asset Mgt (formerly F&C)
Manager	Sam Cosh
Address	Exchange House, Primrose Street, London, EC2A 2NY
Phone	+44 (0)800 136420
Website	<a href="http://www.europeanassets.eu">www.europeanassets.eu</a> and <a href="http://www.europeanassets.co.uk">www.europeanassets.co.uk</a>

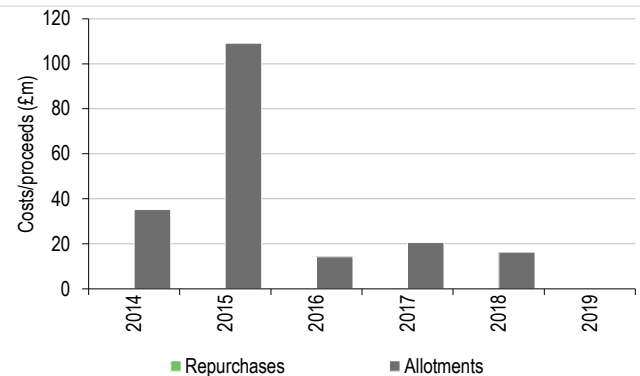
### Dividend policy and history

The board targets a distribution of 6% of euro-denominated NAV as at the end of the preceding year, normally payable in January, April, July and October.

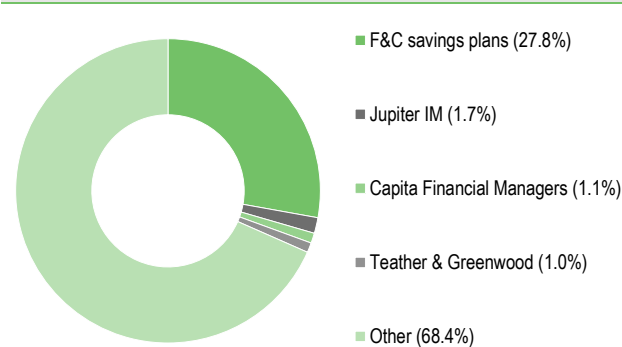


### Share buyback policy and history

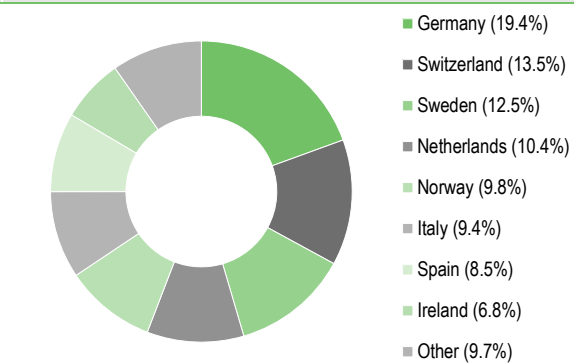
EAT is authorised to both repurchase and allot its ordinary shares. The chart of buybacks and issuance excludes shares issued as scrip dividends.



### Shareholder base (as at 9 January 2019)



### Portfolio exposure by geography (as at 31 December 2018)



### Top 10 holdings (as at 31 December 2018)

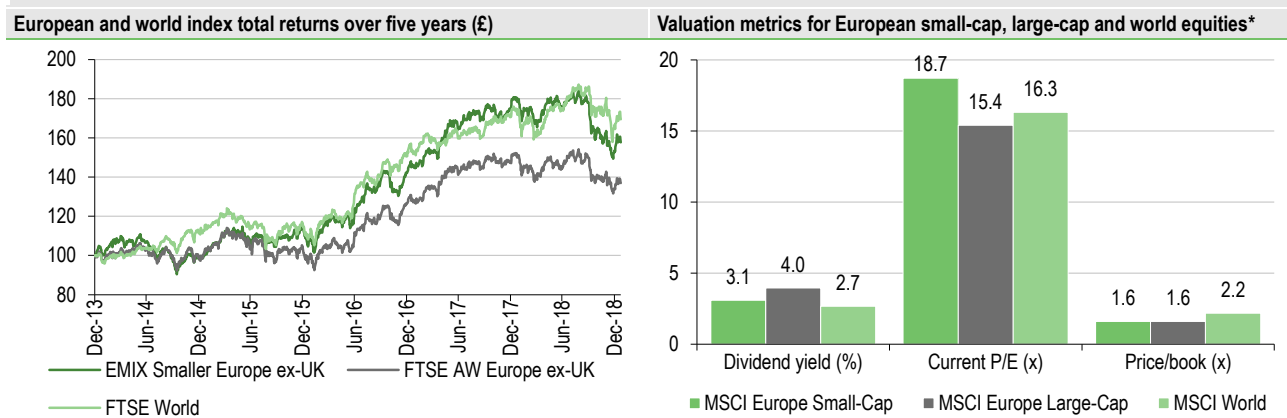
Company	Country	Main area of business	Portfolio weight %	
			31 December 2018	31 December 2017*
CTS Eventim	Germany	Concert and ticketing	3.9	3.6
Gerresheimer	Germany	Glass and plastic containers	3.9	3.5
IMCD Group	Netherlands	Specialty chemicals	3.8	N/A
Ringkøbing Landbobank	Denmark	Banking	3.7	N/A
Forbo Holding	Switzerland	Flooring, adhesives and conveyor belts	3.7	3.4
Coor Service Management	Sweden	Facilities management	3.6	N/A
Vidrala	Spain	Glass bottle manufacturer	3.6	3.1
Wizz Air	Switzerland	Aviation	3.6	N/A
Sparebank	Norway	Banking	3.5	3.4
Cerved Information Solutions	Italy	Data management	3.5	3.4
<b>Top 10 (% of holdings)</b>			<b>36.8</b>	<b>32.8</b>

Source: EAT, Edison Investment Research, Bloomberg, Morningstar. Note: \*N/A where not in December 2017 top 10.

## Market outlook: More volatile and politically driven

At the start of 2018, Europe's economic recovery was still relatively nascent. Led by exporters in 2017, activity extended to domestic sectors and consumer confidence continued to improve. At that time, there were well-known headwinds, including the prospect for higher interest rates, the withdrawal of liquidity as central banks reverse QE, and lofty valuations for European smaller companies, following two years of strong performance (Exhibit 2, LHS). Nevertheless, investors were optimistic that an immature recovery cycle and another solid year of earnings growth could be supportive for European equities. However, the economic recovery appears to have stalled and European stock markets have corrected with the EMIX Smaller Europe ex-UK index down c 12% in sterling terms since its August 2018 peak. Political factors, including a US-China trade dispute and Brexit, have weighed on market sentiment and global growth. Although European equities have fallen, so have expectations for earnings growth and investors' appetite for risk. These political factors seem likely to continue to drive sentiment and the direction of European stock markets over the foreseeable future.

**Exhibit 2: Market performance and valuation**



Source: Thomson Datastream, Edison Investment Research, MSCI. Note: \*Valuation data as at 24 January 2019.

## Fund profile: Fundamental and long term

EAT was launched as a Dutch company in 1972. It aims to achieve capital growth through investing in listed small and medium-sized companies in Europe (excluding the UK), following a fundamental approach in selecting around 40 high-conviction stocks and employing a long-term investment horizon. The board adopts a high distribution policy and EAT's current dividend yield of 6.0% is significantly above its peers (Exhibit 8).

The trust is dual listed on the London and Amsterdam stock exchanges. At a recent EGM held on 10 January 2019, shareholders approved the board's proposal to migrate EAT's legal seat and structure from the Netherlands to the UK (the migration). On completion of the migration, the entire portfolio of investments of the company will transfer to the UK entity. There will be no change to the manager, investment policy or dividend policy. The migration is expected to become effective on 16 March 2019, and the company will be admitted to the premium segment of the main market of the London Stock Exchange on 18 March 2019. Reasons for the migration include:

- an overwhelming majority of the trust's shareholders are UK residents and the investment management and market activities are also performed from the UK;
- a simplified corporate structure;
- a single jurisdiction for current and future regulation;
- a potential reduction in the ongoing charges rate; and

- a premium listing on the London Stock Exchange and potential inclusion in the FTSE Small Cap and FTSE All-Share indices, subject to satisfying liquidity requirements. The manager believes inclusion in these indices could increase demand for the company's shares.

## The fund manager: Sam Cosh

---

### The manager's view: Quality and valuation are key

Cosh started to turn more cautious on European equities in early 2018, as he believed the extraordinarily favourable liquidity conditions of the past several years were coming to an end, and valuations for European small-cap equities looked stretched. As a result, he reduced EAT's cyclical exposure during 2018. The manager notes the slowdown in Europe's economic growth has been greater than anticipated and may have been much exacerbated by political developments, such as the US-China trade dispute and Brexit. However, Cosh does not focus on macroeconomic predictions and concentrates on finding quality companies with good valuation support that should do well through economic cycles. He believes European small-cap equities could continue to be volatile for the foreseeable future, and the need to exercise valuation discipline is particularly important. Cosh maintains a 'patient fishermen' list of companies that are fundamentally attractive, but unattractively valued. These names are constantly monitored for opportune entry points. However, despite the correction in European small-cap equities, the manager finds few high quality businesses that have fallen enough to offer a sufficient balance of upside potential and downside protection, relative to the holdings in the portfolio.

## Asset allocation

---

### Investment process: Rigorous and disciplined

The manager follows a fundamental approach to investing in small to medium-sized companies listed in Europe (excluding the UK), defined as those with a market capitalisation below that of the largest company in the EMIX Smaller European Companies (ex UK) index. The investment approach is benchmark agnostic and Cosh is comfortable being contrarian. He focuses on quality companies with sustainable competitive advantages that have attractive and understandable business models. Company managements are assessed, looking for a track record of good capital allocation and interests that are aligned with those of minority investors. Standardised and proprietary research is produced on investee companies, involving rigorous and detailed analysis, to help ensure objectivity in investment decisions. Capital preservation is as important an objective as capital growth, and therefore analysis of cash flow and determining the intrinsic worth of a business are key parts of the investment process.

The manager has four broad investment themes (typical portfolio weights shown in brackets):

- Durable franchises (40–50%). Businesses with robust models, disciplined management, sustainable good returns and scope for at least modest growth.
- Wide moat growth (25–30%). Companies with a sustainable competitive advantage, able to defend their market position and support higher capital growth.
- Transformation/recovery (15–20%). Firms that can unlock value; for example, as a result new management or an improvement in capital allocation.
- Deep value (10–15%). Investments in companies that are out of favour but have surmountable obstacles to business performance, and very attractive risk-reward ratios.

The investment process involves a strong sell discipline, and qualitative sell triggers are identified for each stock prior to purchase. These are in addition to valuation and relative performance-related triggers that would automatically flag a review of an investment.

## Current portfolio positioning

Exhibit 3 shows the portfolio's country and sector exposures at end-December 2018 compared to the previous year. Over the past year, most of the activity occurred in H118. The consumer goods and industrials exposures have fallen notably by 7.0pp and 4.0pp respectively, reflecting the manager's decision in early 2018 to reduce EAT's exposure to cyclical and more expensively valued stocks (see [EAT July 2018](#)). Sales included Spain-listed Ebro Foods, Finnish sports brand company Amer Sports and Sweden-listed building materials supplier Nordic Waterproofing.

The largest exposure increases are to the consumer services (+6.5pp) and healthcare (+3.8pp) sectors. In H218 EAT initiated a new position in Netherlands-listed online food delivery company Takeaway.com. Established in 2000, it has a dominant position in its Dutch home market and has been expanding its platform in Europe. The manager believes the company has particularly attractive growth prospects in Germany and Poland. In December 2018, Takeaway.com acquired its competitor in Germany, Delivery Hero, consolidating its leadership in this market, a development that was well received by investors (reflected in a 26% appreciation in its stock price following the announcement of the transaction). When EAT initiated the position, Cosh believed the valuation largely reflected Takeaway.com's Dutch operations, suggesting very low values were being ascribed to the company's businesses in Germany and Poland.

In the healthcare sector, EAT purchased two new stocks, DiaSorin (in Italy) and Tecan (in Switzerland). Both companies are involved in diagnostics and are well-placed beneficiaries of increasing automation in the healthcare industry, which the manager believes can support long-term growth prospects, while being relatively less sensitive to economic cycles.

Portfolio activity in H218 was modest. The manager sold Spanish stock market operator, Bolsas y Mercados Españoles (BME) as he believes increasing pressure from the regulator to increase competition may erode the company's 'moat' and future margins. Furthermore, BME was trading at a relatively expensive valuation and was vulnerable to derating.

**Exhibit 3: Portfolio geographic and industrial exposure\* (% unless stated)**

	Portfolio end-Dec 2018	Portfolio end-Dec 2017	Change (pp)		Portfolio end-Dec 2018	Portfolio end-Dec 2017	Change (pp)
Germany	19.4	21.0	(1.5)	Industrials	26.7	30.7	(4.0)
Switzerland	13.5	8.5	5.0	Consumer goods	17.9	24.9	(7.0)
Sweden	12.5	11.1	1.4	Consumer services	17.1	10.6	6.5
Netherlands	10.4	5.4	5.0	Financials	15.3	16.4	(1.1)
Norway	9.8	8.6	1.2	Healthcare	9.6	5.8	3.8
Italy	9.4	6.4	3.0	Basic materials	7.8	6.2	1.6
Spain	8.5	13.3	(4.8)	Technology	4.0	5.4	(1.4)
Ireland	6.8	11.4	(4.6)	Oil & gas	1.6	0.0	1.6
Denmark	3.7	5.0	(1.3)				
France	3.3	4.2	(0.9)				
Austria	2.6	2.0	0.6				
Finland	0.0	3.1	(3.1)				
<b>Total</b>	<b>100.0</b>	<b>100.0</b>		<b>Total</b>	<b>100.0</b>	<b>100.0</b>	

Source: European Assets Trust, Edison Investment Research. Note: \*All figures are subject to rounding.

Other activities in H218 involved marginal trims and additions to existing positions. Strong performance from Norway-listed Tomra presented multiple opportunities for partial profit taking. The company has the world's largest market share in reverse vending machines and a growing sorting business (used by the food, recycling and mining industries). In the manager's view, Tomra is particularly well placed to benefit from a rising global trend for recycling, with its leading technology and scale advantages. These factors should support long-term growth, as well as reduce the company's sensitivity to economic cycles.

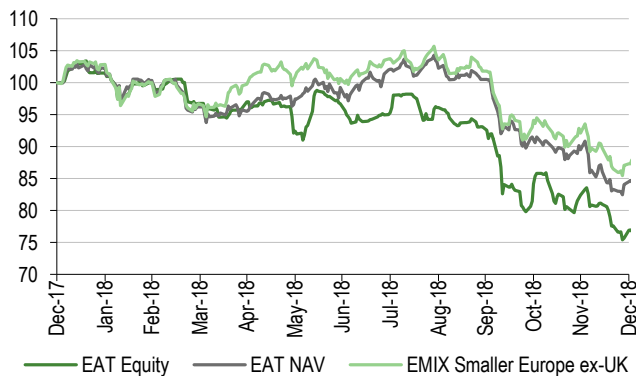
The manager believes the portfolio is in good shape with characteristics that reflect the focus on quality and valuation. EAT has a similar forward P/E multiple valuation to the benchmark; however, it has a higher ROE of 15% (vs 12%) and lower net debt/EBITDA of 0.8x (vs 2.7x).

## Performance: Strong long-term returns

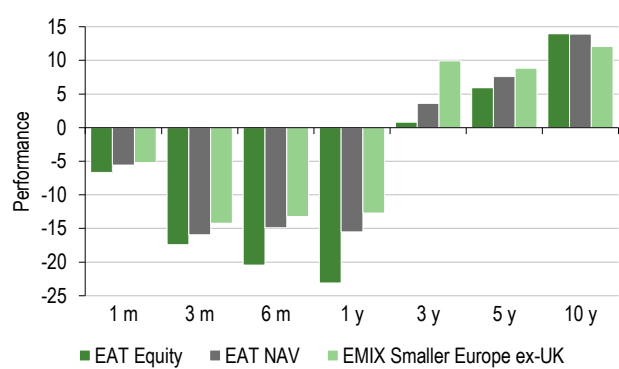
The manager is focused on long-term performance and Exhibits 4 (RHS) and 5 show that EAT's NAV total return over 10 years has significantly outperformed the EMIX Smaller Europe ex-UK, FTSE AW Europe ex-UK and FTSE All-Share indices. However, over the shorter periods EAT has underperformed. The most pronounced period of underperformance is over three years as the trust was poorly positioned for the outcome of the EU referendum in June 2016 with a significant position in Irish companies heavily exposed to the UK. Over one year, a large part of the underperformance occurred in April 2018, when the index performance was led by a narrow set of companies in the utilities, telecoms and oil & gas sectors. EAT was underweight these sectors, which are typically dependent upon regulation and commodity prices, characteristics the manager finds unattractive.

**Exhibit 4: Investment trust performance to 31 December 2018**

Price, NAV and benchmark total return performance, one-year rebased



Price, NAV and benchmark total return performance (%)



Source: Thomson Datastream, Edison Investment Research. Note: Three-, five- and 10-year performance figures annualised.

**Exhibit 5: Share price and NAV total return performance, relative to indices (%)**

	One month	Three months	Six months	One year	Three years	Five years	10 years
Price relative to EMIX Smaller Europe ex-UK	(1.5)	(3.7)	(8.3)	(11.9)	(22.9)	(12.6)	18.4
NAV relative to EMIX Smaller Europe ex-UK	(0.7)	(2.2)	(2.1)	(3.5)	(16.4)	(5.7)	17.5
Price relative to FTSE AW Europe ex-UK	(2.1)	(7.4)	(13.6)	(15.4)	(20.5)	(0.4)	71.9
NAV relative to FTSE AW Europe ex-UK	(1.3)	(6.0)	(7.8)	(7.3)	(13.8)	7.4	70.6
Price relative to FTSE All-Share	(3.0)	(8.0)	(10.7)	(15.0)	(14.4)	9.3	55.1
NAV relative to FTSE All-Share	(2.2)	(6.6)	(4.6)	(6.9)	(7.2)	17.8	54.0

Source: Thomson Datastream, Edison Investment Research. Note: Data to end-December 2018. Geometric calculation.

**Exhibit 6: NAV total return performance relative to benchmark over five years**

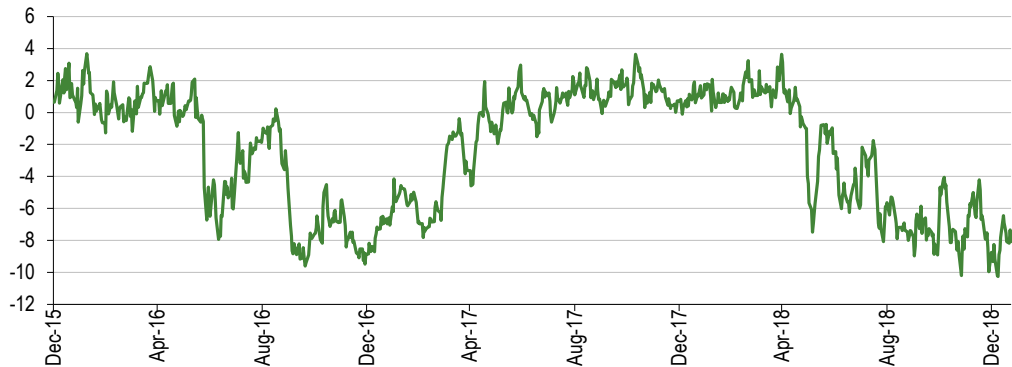


Source: Thomson Datastream, Edison Investment Research

## Discount: Wider than average

EAT currently trades on a discount to cum-income NAV of 7.8%, which is considerably wider than the three-year average of 2.3%, and towards the high end of the range for this period (a 3.7% premium to a 10.3% discount). As shown in Exhibit 7, EAT often trades close to its NAV and wider discounts have generally reflected periods of unusually high uncertainty for European equities, including the EU referendum, the US presidential elections, and more recently, concerns surrounding trade disputes and Brexit.

**Exhibit 7: Share price premium/discount to NAV (including income) over three years (%)**



Source: Thomson Datastream, Edison Investment Research

## Capital structure and fees

EAT has one class of share and, following a 10-for-one stock split in May 2018, there are 359.8m ordinary shares in issue and none held in treasury. On completion of the migration, shareholders will be entitled to receive one ordinary share in the UK-registered company for each share held in the Netherlands-registered company. Demand for the trust's shares has historically been positive, and the board has been able to issue new shares through block listing arrangements to meet investor demand. During FY18, EAT allotted 7.7m shares, raising c €16.2m (FY17 issued the equivalent of 1.6m shares, raising €20.5m). This leaves a balance of 5.2m shares available for issuance.

The trust has a €45m loan facility with Kas Bank and as at end-December 2018, EAT had net gearing of 0.7%. A tiered management fee was introduced in November 2017, payable annually to BMO Global Asset Management. A fee of 0.80% is payable on the value of funds below €500m, reducing to 0.65% on funds above €500m (previously a flat fee of 0.80%).

## Dividend policy and record

The EAT board has a distribution policy to pay shareholders a dividend of 6% of the trust's preceding year-end NAV, funded from income and other reserves. It recently announced 2019 total dividends of €0.0684 per share (2018: €0.088) reflecting a 16.3% decline in the trust's euro-denominated NAV total return (with dividends reinvested) for the year to end-December 2018. The annual dividend is paid in four instalments, normally in January, April, July and October. In 2019, the instalment normally paid in April will be paid in March to ensure the company still has its Dutch taxation status until the migration in March. Following the migration, dividends will be paid by the UK entity and will no longer be subject to Dutch withholding tax. Dividends are declared in euros and paid in either euros or sterling, with the exchange rate determined as close as practicable to

the date of payment. Following the migration, dividends will initially continue to be declared in euros for at least the first financial year.

## Peer group comparison

EAT is a member of the AIC European Smaller Companies peer group, which consists of just four trusts. It has a significantly higher dividend yield than its peers (at 6%). It also ranks first in terms of the discount to cum-fair NAV. EAT's ongoing charges are close to the peer group average, ranking second. The trust's NAV total returns rank second over one and 10 years, and fourth over three and five years.

**Exhibit 8: AIC European Smaller Companies peer group as at 23 January 2019\***

% unless stated	Market cap £m	NAV TR 1 year	NAV TR 3 year	NAV TR 5 year	NAV TR 10 year	Discount (cum fair)	Ongoing charge	Perf. fee	Net gearing	Dividend yield (%)
European Assets Trust	349.0	(13.8)	24.4	47.5	303.2	(7.4)	1.1	No	101	6.0
JPMorgan European Smaller Cos	545.4	(14.3)	40.3	60.0	257.0	(12.6)	1.0	No	103	2.0
Montanaro European Smaller	142.2	0.2	65.5	70.7	318.8	(8.8)	1.2	No	94	1.0
TR European Growth	419.4	(23.1)	48.3	60.9	295.5	(9.7)	0.7	Yes	113	2.3
<b>Simple average in sector</b>	<b>364.0</b>	<b>(12.7)</b>	<b>44.7</b>	<b>59.8</b>	<b>293.6</b>	<b>(9.6)</b>	<b>1.0</b>		<b>103</b>	<b>2.8</b>
<b>EAT rank in sector</b>	<b>3</b>	<b>2</b>	<b>4</b>	<b>4</b>	<b>2</b>	<b>1</b>	<b>2</b>		<b>3</b>	<b>1</b>

Source: Morningstar, Edison Investment Research. Note: \*Performance data to 22 January 2019. TR = total return. Net gearing is total assets less cash and equivalents as a percentage of net assets.

## The board

EAT is incorporated in the Netherlands and has five independent supervisory board members, all of whom will remain on the board after the migration. It is chaired by Jack Perry (appointed in 2014). Professor Robert van de Meer is deputy chairman (2007) and Julia Bond is the senior independent director (2014). The other directors are Laurence Jacquot (2011) and Martin Breuer (2016).



---

## General disclaimer and copyright

This report has been commissioned by European Assets Trust and prepared and issued by Edison, in consideration of a fee payable by European Assets Trust. Edison Investment Research standard fees are £49,500 pa for the production and broad dissemination of a detailed note (Outlook) following by regular (typically quarterly) update notes. Fees are paid upfront in cash without recourse. Edison may seek additional fees for the provision of roadshows and related IR services for the client but does not get remunerated for any investment banking services. We never take payment in stock, options or warrants for any of our services.

**Accuracy of content:** All information used in the publication of this report has been compiled from publicly available sources that are believed to be reliable, however we do not guarantee the accuracy or completeness of this report and have not sought for this information to be independently verified. Opinions contained in this report represent those of the Edison analyst at the time of publication. Forward-looking information or statements in this report contain information that is based on assumptions, forecasts of future results, estimates of amounts not yet determinable, and therefore involve known and unknown risks, uncertainties and other factors which may cause the actual results, performance or achievements of their subject matter to be materially different from current expectations.

**Exclusion of Liability:** To the fullest extent allowed by law, Edison shall not be liable for any direct, indirect or consequential losses, loss of profits, damages, costs or expenses incurred or suffered by you arising out of or in connection with the access to, use of or reliance on any information contained on this note.

**No personalised advice:** The information that we provide should not be construed in any manner whatsoever as, personalised advice. Also, the information provided by us should not be construed by any subscriber or prospective subscriber as Edison's solicitation to effect, or attempt to effect, any transaction in a security. The securities described in the report may not be eligible for sale in all jurisdictions or to certain categories of investors.

**Investment in securities mentioned:** Edison has a restrictive policy relating to personal dealing and conflicts of interest. Edison Group does not conduct any investment business and, accordingly, does not itself hold any positions in the securities mentioned in this report. However, the respective directors, officers, employees and contractors of Edison may have a position in any or related securities mentioned in this report, subject to Edison's policies on personal dealing and conflicts of interest.

**Copyright:** Copyright 2019 Edison Investment Research Limited (Edison). All rights reserved FTSE International Limited ("FTSE") © FTSE 2019. "FTSE®" is a trade mark of the London Stock Exchange Group companies and is used by FTSE International Limited under license. All rights in the FTSE indices and/or FTSE ratings vest in FTSE and/or its licensors. Neither FTSE nor its licensors accept any liability for any errors or omissions in the FTSE indices and/or FTSE ratings or underlying data. No further distribution of FTSE Data is permitted without FTSE's express written consent.

---

## Australia

Edison Investment Research Pty Ltd (Edison AU) is the Australian subsidiary of Edison. Edison AU is a Corporate Authorised Representative (1252501) of Myonlineadvisers Pty Ltd who holds an Australian Financial Services Licence (Number: 427484). This research is issued in Australia by Edison AU and any access to it, is intended only for "wholesale clients" within the meaning of the Corporations Act 2001 of Australia. Any advice given by Edison AU is general advice only and does not take into account your personal circumstances, needs or objectives. You should, before acting on this advice, consider the appropriateness of the advice, having regard to your objectives, financial situation and needs. If our advice relates to the acquisition, or possible acquisition, of a particular financial product you should read any relevant Product Disclosure Statement or like instrument.

---

## New Zealand

The research in this document is intended for New Zealand resident professional financial advisers or brokers (for use in their roles as financial advisers or brokers) and habitual investors who are "wholesale clients" for the purpose of the Financial Advisers Act 2008 (FAA) (as described in sections 5(c) (1)(a), (b) and (c) of the FAA). This is not a solicitation or inducement to buy, sell, subscribe, or underwrite any securities mentioned or in the topic of this document. For the purpose of the FAA, the content of this report is of a general nature, is intended as a source of general information only and is not intended to constitute a recommendation or opinion in relation to acquiring or disposing (including refraining from acquiring or disposing) of securities. The distribution of this document is not a "personalised service" and, to the extent that it contains any financial advice, is intended only as a "class service" provided by Edison within the meaning of the FAA (i.e. without taking into account the particular financial situation or goals of any person). As such, it should not be relied upon in making an investment decision.

---

## United Kingdom

Neither this document and associated email (together, the "Communication") constitutes or form part of any offer for sale or subscription of, or solicitation of any offer to buy or subscribe for, any securities, nor shall it or any part of it form the basis of, or be relied on in connection with, any contract or commitment whatsoever. Any decision to purchase shares in the Company in the proposed placing should be made solely on the basis of the information to be contained in the admission document to be published in connection therewith.

This Communication is being distributed in the United Kingdom and is directed only at (i) persons having professional experience in matters relating to investments, i.e. investment professionals within the meaning of Article 19(5) of the Financial Services and Markets Act 2000 (Financial Promotion) Order 2005, as amended (the "FPO") (ii) high net-worth companies, unincorporated associations or other bodies within the meaning of Article 49 of the FPO and (iii) persons to whom it is otherwise lawful to distribute it. The investment or investment activity to which this document relates is available only to such persons. It is not intended that this document be distributed or passed on, directly or indirectly, to any other class of persons and in any event and under no circumstances should persons of any other description rely on or act upon the contents of this document (nor will such persons be able to purchase shares in the placing).

This Communication is being supplied to you solely for your information and may not be reproduced by, further distributed to or published in whole or in part by, any other person.

---

## United States

The Investment Research is a publication distributed in the United States by Edison Investment Research, Inc. Edison Investment Research, Inc. is registered as an investment adviser with the Securities and Exchange Commission. Edison relies upon the "publishers' exclusion" from the definition of investment adviser under Section 202(a) (11) of the Investment Advisers Act of 1940 and corresponding state securities laws. This report is a bona fide publication of general and regular circulation offering impersonal investment-related advice, not tailored to a specific investment portfolio or the needs of current and/or prospective subscribers. As such, Edison does not offer or provide personal advice and the research provided is for informational purposes only. No mention of a particular security in this report constitutes a recommendation to buy, sell or hold that or any security, or that any particular security, portfolio of securities, transaction or investment strategy is suitable for any specific person.