

This document provides you with key investor information about this fund. It is not marketing material. The information is required by law to help you understand the nature and the risks of investing in this fund. You are advised to read it so you can make an informed decision about whether to invest.

## BMO FTSE All-Share Tracker Fund

Share Class: 2 Acc, a Fund of BMO Investment Funds (UK) ICVC (ISIN GB0033138131).  
This Fund is managed by BMO Fund Management Ltd.

### Objectives and investment policy

The Fund aims to provide capital growth with some income, which tracks the performance of the FTSE All-Share Index.

The Fund will invest almost exclusively in shares that are included in the FTSE All-Share Index. The Fund is constrained by the Index and will hold an optimised portfolio to track the returns of the Index. This means that the investment manager will purchase the components of the Index that the investment manager believes provide a representative sample in order to replicate the overall performance of the Index.

To the extent that the Fund is not fully invested in shares that are included in the Index, the Fund may be invested in shares of companies which in the investment manager's opinion are reasonably expected to become part of the Index.

The Fund may also obtain an indirect exposure to these securities by investing in other transferable securities or collective investment schemes (which may include schemes managed by BMO) as well as investing in cash and near cash, deposits and money market instruments.

The Fund may use derivatives (an investment contract between the Fund and a counterparty the value of which is derived from one or more underlying equities) only for the purposes of efficient portfolio management.

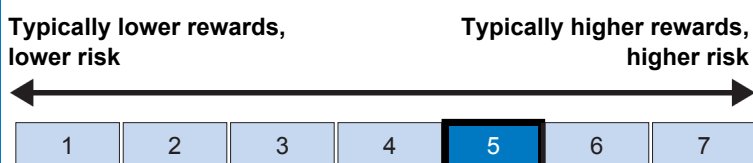
Any income earned by this share class will be reinvested back into the share class to help boost the value of a share.

There is no minimum holding period for this Fund. However, it may not be appropriate for investors who plan to withdraw their money in under 5 years.

You may buy or sell shares daily on demand (but not weekends or UK bank holidays or other days when the Fund is not open for dealing). Orders to buy or sell must be received by 12 noon (UK time) to receive the price calculated at that day's valuation point.

### Risk and reward profile

The Risk and Reward Indicator table demonstrates where the Fund ranks in terms of its potential risk and reward. The higher the rank the greater the potential reward but the greater the risk of losing money. It is based on past data, may change over time and may not be a reliable indication of the future risk profile of the Fund. The shaded area in the table below shows the Fund's ranking on the Risk and Reward Indicator.



Historical data may not be a reliable indicator of the Fund's future risk and reward profile. The risk category shown is not guaranteed and may change over time. The lowest category does not mean 'risk free'. The value of your investment may fall as well as rise.

The category is based on the rate at which the value of the investments held by the Fund have moved up and down in the past.

The indicator does not adequately reflect the following risks of investing in particular assets, which may impact on future investment return:

**Index Tracking Risk:** Financial Conduct Authority regulations on the use of derivatives and spread investments may mean the Fund is unable to track the Index as otherwise possible.

**Liquidity Risk:** the ability to buy and sell assets at a favourable price may be affected by a low level of counterparties willing to enter into a transaction with the Fund.

**Smaller Companies Risk:** smaller companies carry a higher degree of risk and their value can be more sensitive to market movement.

**Derivative Risk:** derivative values rise and fall at a greater rate than equities and debt instruments. Losses can be greater than the initial investment.

## Charges

The charges you pay are used to pay the costs of running the Fund, including the costs of marketing and distributing it. These charges reduce the potential growth of your investment.

### One-off charges taken before or after you invest

Entry charge	0.00%
Exit charge	0.00%

These are the maximum charges that we might take out of your money before it is invested and before we pay out the sale proceeds of your investment. In some cases, you might pay less and you should speak to your financial adviser about this.

### Charges taken from the Fund over a year

Ongoing charges	0.31%
-----------------	-------

### Charges taken from the Fund under specific conditions

Performance fee	NONE
-----------------	------

The ongoing charges figure is based on the last year's expenses and may vary from year to year. It excludes the costs of buying or selling assets for the Fund (unless these assets are shares of another fund).

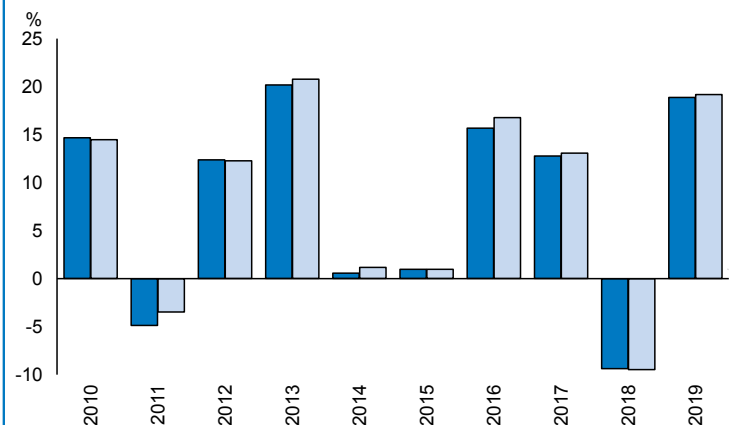
The ongoing charges figure is at 30/11/2019

It excludes:

- Performance fees
- Portfolio transaction costs, except in the case of an entry/exit charge paid by the UCITS when buying or selling units in another collective investment undertaking.

For more information about charges, please see the section entitled Fees and Expenses in the Fund's prospectus, which is available at [www.bmogam.com](http://www.bmogam.com).

## Past performance



	2010	2011	2012	2013	2014	2015	2016	2017	2018	2019
Fund	14.7	-4.9	12.4	20.2	0.6	1.0	15.7	12.8	-9.4	18.9
Index*	14.5	-3.5	12.3	20.8	1.2	1.0	16.8	13.1	-9.5	19.2

Source: FE fundinfo 2020

You should be aware that past performance is not a guide to future performance.

Fund launch date: 15/09/1988.

Share/unit class launch date: 26/08/2003.

Performance is calculated in GBP.

The chart shows how much the Fund increased or decreased in value as a percentage in each year, net of charges (excluding entry charge), and net of tax.

\* FTSE All Share

## Practical information

This document is issued by BMO Fund Management Limited (trading name BMO Global Asset Management).

Further information regarding the Fund including copies of the prospectus, annual and half yearly report and accounts can be obtained free of charge from Retail Sales Support, BMO Global Asset Management, 6th Floor, Quatermile4, 7a Nightingale Way, Edinburgh EH3 9EG, telephone: Sales Support on 0800 085 0383, email: [sales.support@bmogam.com](mailto:sales.support@bmogam.com) or electronically at [www.bmogam.com](http://www.bmogam.com).

The Fund is part of BMO Investment Funds (UK) ICVC. You may switch investment between other funds or share classes of BMO Investment Funds (UK) ICVC. An entry charge may apply. Details on switching are provided in the Fund's prospectus.

The assets and liabilities are segregated by law between the different funds of BMO Investment Funds (UK) ICVC. This means that the Fund's assets are held separately from other funds. Your investment in the Fund will not be affected by any claims made against any other fund in BMO Investment Funds (UK) ICVC.

Details of the up to date remuneration policy including but not limited to a description of how remuneration and benefits are calculated will be available on [www.bmogam.com](http://www.bmogam.com) when and in so far as available.

Other practical information, including the latest published price for the Fund is available on our website [www.bmogam.com](http://www.bmogam.com).

The Depositary for the Fund is State Street Trustees Limited.

The tax legislation of the United Kingdom may have an impact on your personal tax position depending on your country of residence.

BMO Fund Management Limited may be held liable solely on the basis of any statement contained in this document that is misleading, inaccurate or inconsistent with the relevant parts of the prospectus for the Fund.